



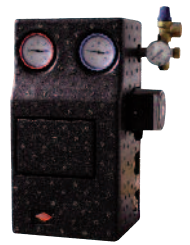
# FITTINGS TECHNOLOGY

Solar station



WILHELM TAAKE GMBH Pumps, Valves and Control technology  
Böllingshöfen 85 · D-32549 Bad Oeynhausen · Tel.: 0 57 34- 51 23 80 · Fax: 0 57 34-17 52  
Internet: <http://www.wita-taake.de> · e-mail: [info@wita-taake.de](mailto:info@wita-taake.de)

# Solar station



## Equipment

The WITA solar station is designed as a two-circuit system. The solar station includes all fittings and equipment required for trouble-free operation in solar heating systems, such as one or two gravity brakes, safety devices and complete insulation.

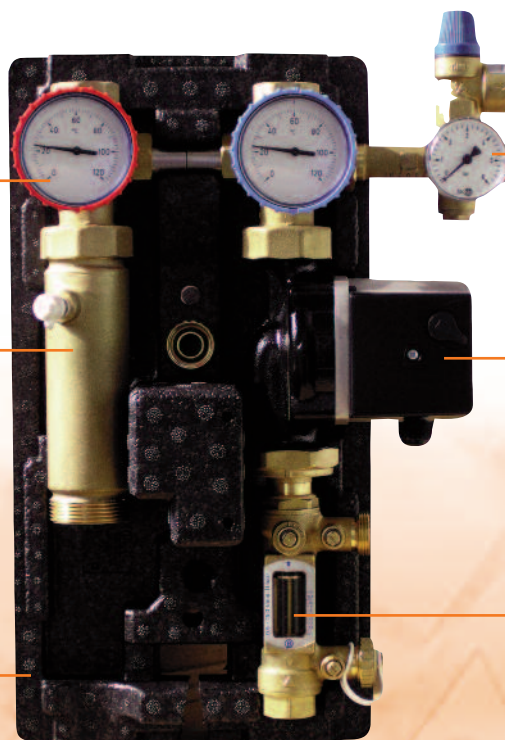
Thanks to shut-off valves in front of and behind the pump, the unit can be replaced without having to drain the system. Gauge thermometers are fitted in the actuating handles of the ball valves. The solar pump assemblies are equipped with gravity brakes in the supply and return lines, located in the ball valves, in

order to prevent unwanted circulation. The gravity brakes can be opened manually by operating the ball valves. The 0.5 - 15 l/min version is available as a throughflow measurement device. For reliable ventilation of the system, the unit includes a large-volume air collector, which can be emptied manually by means of the manual ventilation device. Due to the low thermal load, the other necessary equipment such as the manometer, safety valve and connection for the expansion vessel are installed in the return line.

Two 4-way ball valves with manually operated gravity brake in the supply and return lines, two thermometers integrated into the ball valve (display range 0 °C - 120 °C)

Ventilation unit with manual ventilation device

EPP insulation



Safety assembly including safety valve, manometer, and connection facility for an expansion vessel

WITA solar circulation pump, cataphoresis-coated and with pre-wired connection cable

Flushing, filling and drainage device with integral throughflow-limiter and volume flow display

## Technical data

Operating pressure	max. 6 bar
Operating temperature	VL max. 110°C, 130°C possible for short periods RL max. 110°C
Medium	Water with max. 50% glycol
Nominal size	DN 25
Axial separation	120 mm
Connections	3/4" internal thread 3/4" external thread for expansion vessel
Dimensions(H x W x D)	420 x 220 x 200
Seals	EPDM, PTFE special compound
Insulation	EPP foam, heat conductivity = 0.025W/mK

## Pump selection

WITA U 35-25 S	WITA U 55-25 S
Length 130 mm	Length 130 mm
Nominal size DN25	Nominal size DN25
Feed height 4 m	Feed height 6 m

